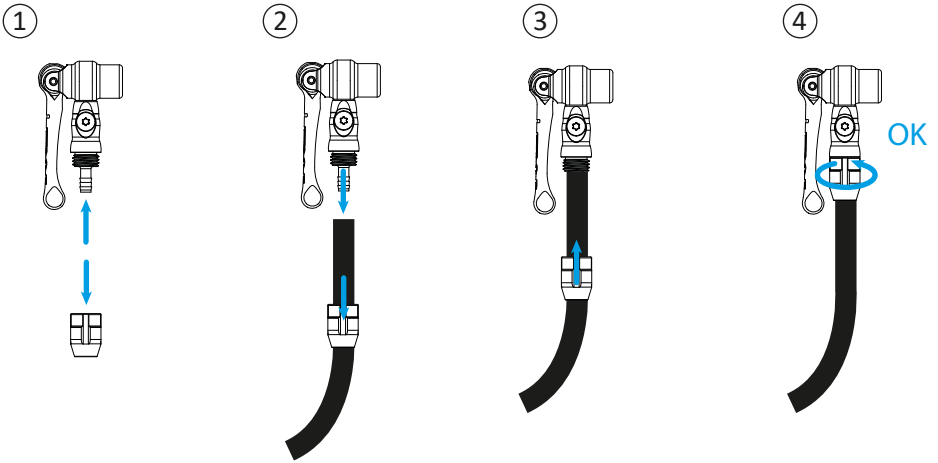


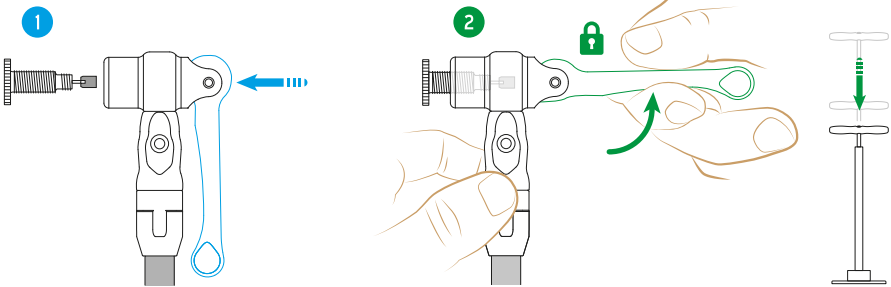
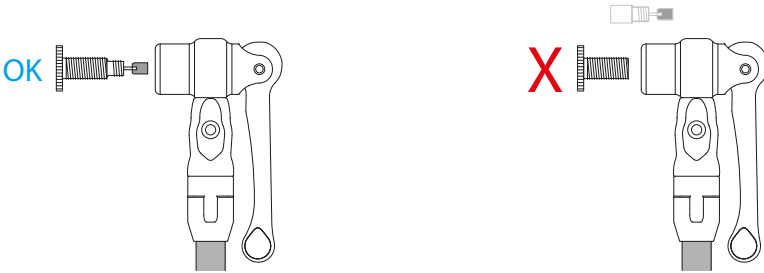
Mounting

Compatible with Lezyne HP and HV floor pumps only, max 220psi or 15.2bar.

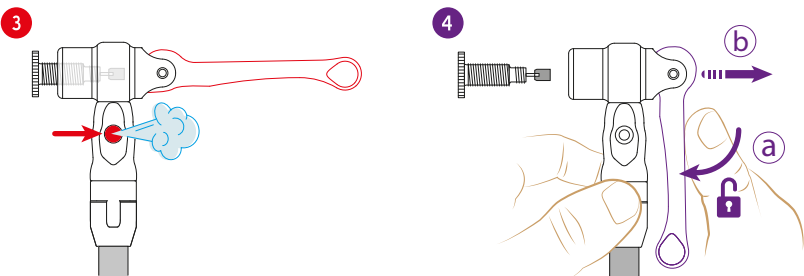


Operation

Presta only application. Ensure valve core is installed for correct function.



Firmly secure pump head when actuating lever to locked or unlocked positions in order not to damage valve.



Use the Valve Bleed Button to release air from the tire to adjust to the desired pressure.

More Information

For more information on Lezyne products, visit: www.lezyne.com

CORPORATE HQ
Lezyne USA, Inc.
5470 Kietzke Lane, Suite 300
Reno, NV 89511

CALIFORNIA OFFICE
645 Tank Farm Rd., Suite F,
San Luis Obispo, California
93401

TAIWAN BRANCH / MANUFACTURER
No.162, Shigu Lane
Guozhong Road, Dali District
Taichung City 412, Taiwan, ROC

LEZYNE GmbH EUROPE
Rolandstrasse 4
14129 Berlin, Germany